

# \$3,250,000 - 1300 And 1302 Norwalk Ln, Austin

MLS® #1713395

**\$3,250,000**

0 Bedroom, 0.00 Bathroom,  
Commercial on 0.60 Acres

Westfield A, Austin, TX

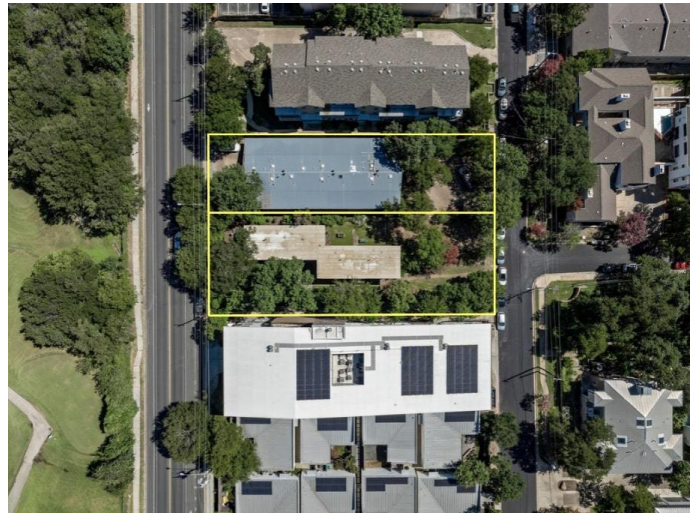
A rare development opportunity in the heart of West Austin.

Located on a quiet street in Deep Eddy, 1300 & 1302 Norwalk Lane currently consist of two multifamily buildings featuring a total of 6 one-bedroom units and 6 two-bedroom units, with only one unit currently vacant. This setup provides holding income while you pursue design and planning approval for redevelopment or refurbishment of the existing improvements.

The property spans a gently sloping, rectangular 0.6-acre lot with dual street frontage. Zoned MF-3, it allows for up to 20,000 square feet of Gross Floor Area and up to 21 units. Preliminary schematics show a layout including a driveway and 12 x 1600 sq. ft. with 2-car garages and private roof terraces.

This property is across the road from the Muni Golf Course and a short walk to O'Henry Middle School, HEB and Maudies. It is also less than a mile to Westenfield Park / Pool / Tennis Courts, Littlefields, and Juiceland; and less than 2 miles to Austin High, Zilker Park, Barton Springs, Town Lake, Lake Austin, numerous bars and restaurants on West Lynn and West 6th St. It's proximity to MoPac delivers direct connectivity to the airport, the Domain, and highways 183, 71 and 290. This property is zoned to Austin ISD's best schools.

Built in 1963



## Essential Information

MLS® #	1713395
Price	\$3,250,000
Bathrooms	0.00
Acres	0.60
Year Built	1963
Type	Commercial
Sub-Type	Multi Family
Status	Active

## Water Feature/View

View	None
------	------

## Community Information

Address	1300 And 1302 Norwalk Ln
Area	1B
Subdivision	Westfield A
City	Austin
County	Travis
State	TX
Zip Code	78703

## Amenities

Utilities	Electricity Connected, Natural Gas Available, Natural Gas Connected, Sewer Connected, Water Available, Water Connected
Parking	Attached Carport, Common, Aggregate

## Interior

Interior	Laminate, Wood
Heating	Natural Gas

## Exterior

Construction	Brick, Clapboard, Wood Siding
Foundation	Pillar/Post/Pier, Slab

## Additional Information

Date Listed	August 11th, 2025
Days on Website	64
Days on Market	4
Zoning	MF-3-NP

Property Listed by: Muskin Elam Group LLCThe information being provided is for consumers' personal, non-commercial use and may not be used for any purpose other than to identify prospective properties consumers may be interested in purchasing. Based on information from the Austin Board of REALTORS® (alternatively, from ACTRIS) from October 14th, 2025 at 7:16pm CDT. Neither the Board nor ACTRIS guarantees or is in any way responsible for its accuracy. The Austin Board of REALTORS®, ACTRIS and their affiliates provide the MLS and all content therein "AS IS" and without any warranty, express or implied. Data maintained by the Board or ACTRIS may not reflect all real estate activity in the market. All information provided is deemed reliable but is not guaranteed and should be independently verified.