

\$995,000 - 1200 Marcy St, Austin

MLS® #4779078

\$995,000

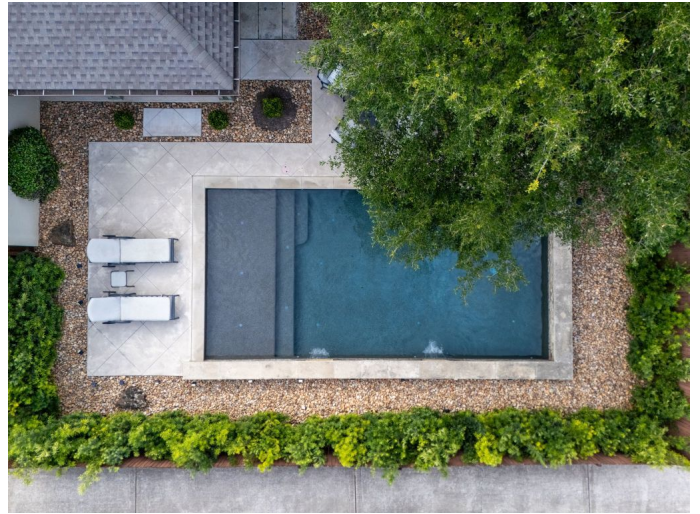
3 Bedroom, 3.00 Bathroom, 2,390 sqft
Residential on 0.19 Acres

Donohoe Add, Austin, TX

Welcome to 1200 Marcy Street, an architecturally refined residence situated in the heart of South Austinâ€™s coveted 78745. Designed with intention and executed with quality, this impeccably maintained home offers a rare combination of elevated interiors and curated outdoor livingâ€”anchored by a custom in-ground pool, covered patio, and fire pit area surrounded by mature trees and lush, professionally landscaped grounds. Just minutes from South Congress, the St. Elmo District, and Downtown Austin, this address places you at the epicenter of the cityâ€™s most iconic dining, music, and cultural destinations.

Inside, the home unfolds with a thoughtfully balanced layout, high ceilings, and sophisticated finishes throughout. At the center is a chef-inspired kitchen appointed with granite countertops, a generous center island, soft-close cabinetry, stainless steel appliances, and modern designer lightingâ€”crafted for both intimate gatherings and large-scale entertaining. Each of the three bedrooms features its own en-suite bathroom, offering elevated privacy and comfort for residents and guests alike. The main level includes a full bedroom and bath, while the upper level offers two additional suites and a versatile landing area ideal for a home office, media lounge, or wellness retreat.

Additional features include an oversized



two-car garage with ample storage and a low-maintenance exterior with premium upgrades. With seamless access to Mopac, I-35, and Highway 71, this residence offers both sanctuary and connectivity in one of Austin’s most enduringly desirable neighborhoods. An exceptional opportunity to own a polished, move-in ready home with timeless design and unrivaled location.

Built in 2010

Essential Information

MLS® #	4779078
Price	\$995,000
Bedrooms	3
Bathrooms	3.00
Full Baths	3
Square Footage	2,390
Acres	0.19
Year Built	2010
Type	Residential
Sub-Type	Single Family Residence
Status	Active Under Contract
Has Pool	Yes

Water Feature/View

View	Neighborhood,TreesWoods
------	-------------------------

Community Information

Address	1200 Marcy St
Area	10N
Subdivision	Donohoe Add
City	Austin
County	Travis
State	TX
Zip Code	78704

Amenities

Utilities	Cable Available, Electricity Connected, High Speed Internet Available,
-----------	--

	Phone Available, Sewer Connected, Underground Utilities, Water Connected, Fiber Optic Available, Natural Gas Connected, Other
Features	Park, Curbs, Internet Access, Suburban
Parking	Attached, Garage Faces Front, Garage, Driveway
# of Garages	2
Garages	Garage Door Opener

Interior

Interior	Carpet, Tile, Wood
Appliances	Dishwasher, Exhaust Fan, Disposal, Gas Range, Microwave, Built-In Gas Oven
Heating	Central, Natural Gas
# of Stories	2
Stories	Two

Exterior

Exterior Features	Rain Gutters, Garden
Lot Description	Back Yard, Front Yard, Landscaped, Level, Many Trees, Sprinklers Automatic, City Lot, Xeriscape
Roof	Composition, Shingle
Construction	Stone, Stucco, HardiPlank Type
Foundation	Slab

School Information

District	Austin ISD
Elementary	St Elmo
Middle	Bedichek
High	Travis

Additional Information

Date Listed	May 15th, 2025
Days on Website	151
Days on Market	138

Property Listed by: Pure RealtyThe information being provided is for consumers' personal, non-commercial use and may not be used for any purpose other than to identify prospective properties consumers may be interested in purchasing. Based on information from the Austin Board of REALTORS® (alternatively, from ACTRIS) from October 13th, 2025 at 6:31pm CDT. Neither the Board nor ACTRIS guarantees or is in any way responsible for its accuracy. The Austin Board of REALTORS®, ACTRIS and their affiliates provide the MLS and all content therein "AS IS" and without any warranty, express or implied. Data maintained by the Board or ACTRIS may not reflect all real estate activity in the market. All information provided is deemed reliable but is not guaranteed and should be independently verified.