

\$799,000 - 14000 & 14002 Skyline Dr, Austin

MLS® #5386944

\$799,000

0 Bedroom, 0.00 Bathroom,
Land / Farm on 0.97 Acres

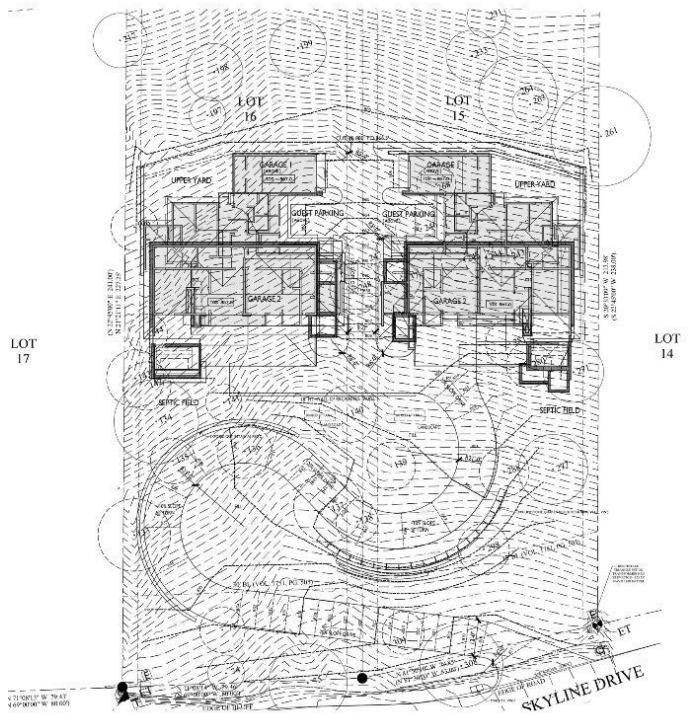
Comanche Trail 03, Austin, TX

Build the home or homes you've always envisioned on this stunning, cleared double lot with amazing views of the main basin of Lake Travis and the beautiful Texas Hill Country! With two approved home plans already in place, you can start building right away. \$100k of primary excavation work has already been done, giving you a head start on your project. This nearly 1-acre property is positioned high above Lake Travis, offering spectacular sunsets and peaceful mornings with lake views. While the two adjacent lots are being sold together, they are also available for sale separately, providing flexibility to suit your needs. The two separate lots are:

14000 Skyline Dr (MLS #3016450)

14002 Skyline Dr (MLS #1345002)

The location is outstanding, with excellent building sites, mature trees, and access to utilities—all set within a scenic neighborhood surrounded by luxury homes. Enjoy a lakeside lifestyle with public access for boating and fishing, a homeowner's park, and close proximity to dining and shopping. Conveniently located near popular spots such as the Oasis restaurant and Hippy Hollow Park, and just a short drive from downtown Austin, Lakeway, Steiner Ranch, Four Points, and major roads like RR 620 and 2222. The property is zoned for the highly-rated Leander ISD and served by WCID#17, providing easy access to everything you need. With deeded lake access and a non-mandatory HOA, you can enjoy the benefits of lakeside living without any extra



fees. The peaceful neighborhood offers hiking trails and gently sloping land, providing privacy and a great setting in the Hill Country. Whether you're planning a full-time home or a relaxing getaway, this unique property offers an affordable way to enjoy the beauty and lifestyle of Lake Travis. Full plans are availableâ€”bring your custom builder and make this the home you've always dreamed of!

Essential Information

MLS® #	5386944
Price	\$799,000
Bathrooms	0.00
Acres	0.97
Type	Land / Farm
Sub-Type	Multiple Parcels
Status	Active

Water Feature/View

View	Hills,Lake,Panoramic,Lake Travis
Water Body	Lake Travis

Community Information

Address	14000 & 14002 Skyline Dr
Area	RN
Subdivision	Comanche Trail 03
City	Austin
County	Travis
State	TX
Zip Code	78732

Amenities

Utilities	Electricity Available, Phone Available, Water Available
Features	Lake

Exterior

Lot Description	Cleared, Views, Rolling Slope, Split Possible
-----------------	---

School Information

District	Leander ISD
Elementary	Grandview Hills
Middle	Four Points
High	Vandegrift

Additional Information

Date Listed	March 29th, 2025
Days on Website	199
Days on Market	178

Property Listed by: Keller Williams - Lake TravisThe information being provided is for consumers' personal, non-commercial use and may not be used for any purpose other than to identify prospective properties consumers may be interested in purchasing. Based on information from the Austin Board of REALTORS® (alternatively, from ACTRIS) from October 14th, 2025 at 9:31pm CDT. Neither the Board nor ACTRIS guarantees or is in any way responsible for its accuracy. The Austin Board of REALTORS®, ACTRIS and their affiliates provide the MLS and all content therein "AS IS" and without any warranty, express or implied. Data maintained by the Board or ACTRIS may not reflect all real estate activity in the market. All information provided is deemed reliable but is not guaranteed and should be independently verified.