

\$199,000 - 14422 Tuscola Circle, Austin

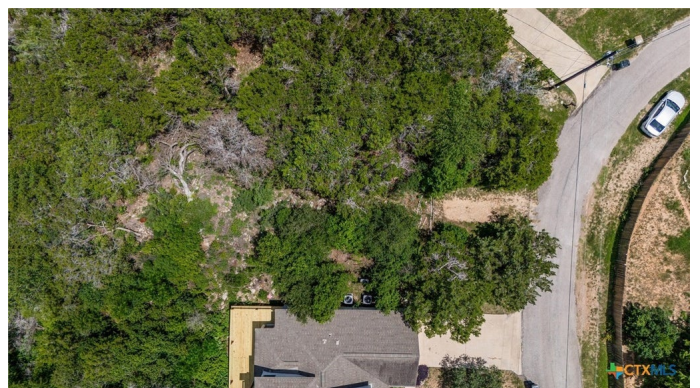
MLS® #584178

\$199,000

0 Bedroom, 0.00 Bathroom,
Land / Farm on 0.62 Acres

Apache Shores Sec 07, Austin, Texas

Come explore the opportunity to build your dream home on this beautiful 0.621-acre lot tucked away in the highly sought-after Apache Shores subdivision. Surrounded by mature native trees and gently sloping terrain, this property offers a peaceful, private setting with potential for sweeping canyon views. Whether you're envisioning a modern custom home, a quiet weekend retreat, or a cozy full-time residence immersed in nature, this lot provides the ideal canvas. Conveniently located to Lakeway and in Lake Travis ISD, you'll enjoy the perfect balance of Hill Country tranquility and easy access to shopping, dining, and all the amenities the Lakeway and Bee Cave areas have to offer. The possibilities are truly endless—bring your vision to life in this serene and scenic setting.



Essential Information

MLS® #	584178
Price	\$199,000
Bathrooms	0.00
Acres	0.62
Type	Land / Farm
Sub-Type	Residential
Status	Active

Water Feature/View

View	Hills, Trees/Woods, Water
------	---------------------------

Water Body Lake Austin

Community Information

Address 14422 Tuscola Circle
Subdivision Apache Shores Sec 07
City Austin
County Travis
State Texas
Zip Code 78734

Amenities

Utilities Electricity Available, Water Available
Features Boat Facilities, Clubhouse, Community Pool, Fishing, Park, Pier, Sport Court(s), Tennis Court(s), Trails/Paths

Exterior

Exterior Features None, Play Structure, Sport Court, Tennis Court(s)

School Information

District Lake Travis ISD

Additional Information

Date Listed June 20th, 2025
Days on Website 121
Days on Market 69
HOA Fees 115

The information being provided by the Central Texas MLS is exclusively for consumers' personal, non-commercial use, and it may not be used for any purpose other than to identify prospective properties consumers may be interested in purchasing. The data is deemed reliable but is not guaranteed accurate by the MLS.