

\$895,000 - 5508 Lipan Apache Bnd, Austin

MLS® #9691789

\$895,000

5 Bedroom, 4.00 Bathroom, 3,389 sqft
Residential on 0.21 Acres

Sweetwater Sec 1 Village G-2, Austin, TX

Luxury Living in Sweetwater â€” Spacious Two-Story with Exceptional Upgrades! Nestled in the highly sought-after Sweetwater community, this stunning Two-story home offers unparalleled comfort with bonus living spaces on the second floor. Boasting 4 bedrooms, 3.5 baths, a dedicated home office, and 3,497 sq. ft. of elegant living space, plus an additional 1,500 sq. ft. of flexible bonus areas, this home is designed for both relaxation and entertainment.

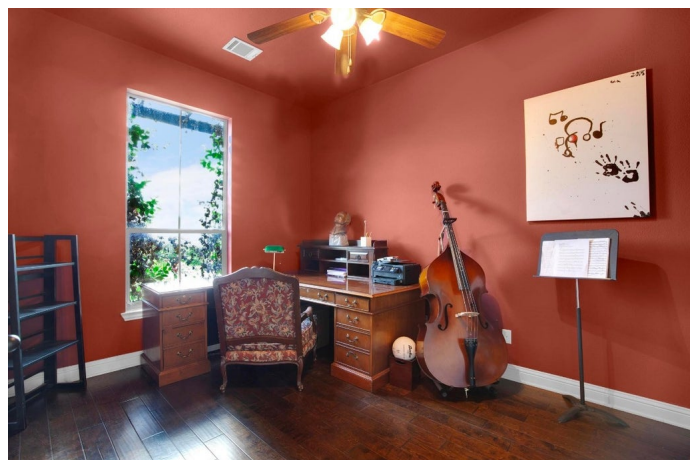
The two upstairs bonus rooms provide endless possibilitiesâ€”one can serve as a fifth bedroom, while the other is perfect for a theater room, game room, or oversized studio.

Step inside to discover gorgeous hardwood floors, an open-concept family room, and a gourmet kitchen with granite countertops, a large center island with bar seating, stainless steel appliances, subway tile backsplash, and a spacious pantry. The ownerâ€™s suite on the main level features wood floors, a spa-like ensuite with a large walk-in shower, double vanity, and a generous walk-in closet.

A private home office provides the perfect workspace for remote professionals.

Outdoors, enjoy a fully covered patio with a built-in kitchen and fireplace, perfect for year-round entertaining. The property includes a two-car garage plus an additional garage ideal for a golf cart or small car.

Sweetwater residents enjoy top-rated schools, resort-style amenities, pools, trails, parks, sports courts, and over 700 acres of preserved



open space. Conveniently located near Bee Cave, Lakeway, and just 30 minutes from Downtown Austin.

Donâ€™t miss this rare opportunityâ€”schedule your showing today!

Built in 2013

Essential Information

MLS® #	9691789
Price	\$895,000
Bedrooms	5
Bathrooms	4.00
Full Baths	3
Half Baths	1
Square Footage	3,389
Acres	0.21
Year Built	2013
Type	Residential
Sub-Type	Single Family Residence
Status	Active

Water Feature/View

View	None
------	------

Community Information

Address	5508 Lipan Apache Bnd
Area	LS
Subdivision	Sweetwater Sec 1 Village G-2
City	Austin
County	Travis
State	TX
Zip Code	78738

Amenities

Utilities	Cable Available, Cable Connected, Electricity Connected, High Speed Internet Available, Sewer Connected, Water Connected
Features	Barbecue, Business Center, Clubhouse, Dog Park, Playground, Pool, Tennis Court(s), Trails/Paths

Parking	Attached, Golf Cart Garage
# of Garages	3

Interior

Interior	Carpet, Wood
Appliances	Built-In Gas Oven, Built-In Gas Range, Dishwasher, Disposal
Heating	Central
# of Fireplaces	2
Fireplaces	Living Room, Wood Burning
# of Stories	2
Stories	Two

Exterior

Exterior Features	Basketball Court, Barbecue, Outdoor Grill, Playground, Tennis Court(s)
Lot Description	Back Yard, Sprinklers In Rear, Sprinklers In Front, Sprinklers Automatic, Few Trees
Roof	Asbestos Shingle
Construction	Brick
Foundation	Slab

School Information

District	Lake Travis ISD
Elementary	Lake Travis
Middle	Lake Travis
High	Lake Travis

Additional Information

Date Listed	March 24th, 2025
Days on Website	204
Days on Market	38
HOA Fees	248
HOA Fees Freq.	Quarterly

Property Listed by: Coldwell Banker RealtyThe information being provided is for consumers' personal, non-commercial use and may not be used for any purpose other than to identify prospective properties consumers may be interested in purchasing. Based on information from the Austin Board of REALTORS® (alternatively, from ACTRIS) from October 14th, 2025 at 7:16pm CDT. Neither the Board nor ACTRIS guarantees or is in any way responsible for its accuracy. The Austin Board of REALTORS®, ACTRIS and their affiliates provide the MLS and all content therein "AS IS" and without any warranty, express or implied. Data maintained by the Board or ACTRIS may not reflect all real estate activity in the market. All information provided is deemed reliable but is not guaranteed and should be independently verified.